

KVM 39X

Truck-mounted concrete pump with 4-section placing boom



Only Schwing makes the longest boom reach available on a three-axle truck with the 39-meter model. Efficient and maneuverable, the 39-meter boom length is ideal for concrete pumpers, ready-mix producers and concrete contractors. This well-balanced unit employs X-Style outriggers for easy, compact set-up in crowded condi-

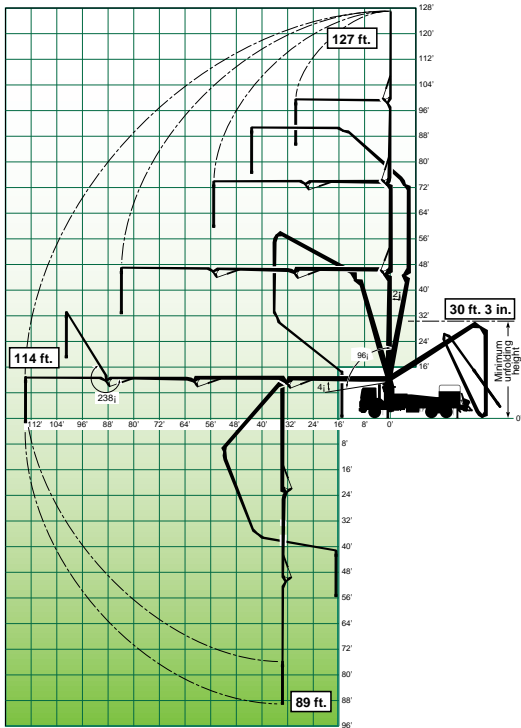
tions yet remains stable in flat-out, maximum reach pumping positions. This combination of footprint and horizontal boom length means the 39X enjoys the longest effective reach in the 30 meter boom class.

Operators will appreciate the operator friendly features of the 39X that translate to time savings on the job site. One keyed switch allows

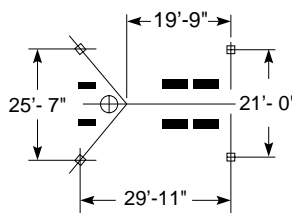
operators to convert to manual boom operation. A simple reset switch returns the boom movement to factory settings. Digital Proportional boom controls provide accurate boom operation without interference.

Generation III pump technology offers the most reliable and cost effective performance available.

The revolutionary Rock Valve continues to supply the lowest maintenance cost per yard while performing on a wide range of mixes. Replacing wear parts or rebuilding this critical component is much faster than other valve types for more productivity and profits.



39X OUTRIGGER SPREAD



Pump Kit on 39X

2023-4

Theor. Concrete Output (cu./yds/hr)	170
Max. Pressure on Concrete (psi)	1007
Max. Strokes/Min.	26
Pump Cylinder Diameter (in.)	9
Pump Cylinder Stroke Length (in.)	79
Differential Cylinder Size (in.)	5.1
Max. Aggregate Size (in.)	2.5
Hydraulic System Pressure (psi)	5075

Specifications are subject to change without prior notice

Boom Specifications

U.S.

Metric

Pipeline Diameter	5"	125 mm	
Vertical Reach	127'	39 m	
Reach from Slewing Axis	114'	35 m	
Net Horizontal Reach	105'-2.5"	32 m	
Unfolding height	30'-3"	9.2 m	
Section Length	First Section	30'-7"	9.3 m
	Second Section	27'-6"	8.4 m
	Third Section	27'-6"	8.4 m
	Fourth Section	28'-2"	8.6 m
Slewing Range	550°	550°	
End hose length	12' 6"	4 m	

Specifications are subject to change without prior notice

SCHWING

5900 Centerville Road
St. Paul, MN 55127
Tel 651-429-0999
Fax 651-429-3464
www.schwing.com

